

Membership

Benefits of being a member of the Wisconsin County Surveyors Association is having a unified voice for the concerns of the county surveyor of Wisconsin, educational and informative meetings, biannual newsletters, a forum for new and ongoing issues concerning the surveying community, specifically county surveyor issues, and of course a chance to network and open lines of communication with county surveyors

- Member \$100
- Affiliate \$ 50
- Sustaining \$150

Make check payable to WCSA

Wisconsin County Surveyors Association



One of the most cherished rights we have in a free society is the opportunity to own land. The County Surveyor stands ready to assist the public in understanding boundary location and land ownership rights. County Surveyors currently hold office in 60 of Wisconsin's 72 counties – 31 serve in a full time capacity; 29 serve in a part-time capacity. Four counties – Iowa, Monroe, Portage and Sauk have an elected county surveyor.

The County Surveyor.....

The primary purpose of the County Surveyor is to restore and protect the corner monuments of the Public Land Survey System (PLSS). These corner monuments are vital to property ownership rights and affect nearly every property description in Wisconsin. Not only does the County Surveyor protect the physical monument in the ground but also keeps up-to-date location records of corner monuments in the office.



The County Surveyor is a knowledgeable professional who stands ready to assist landowners, surveyors, real estate agents, title people, public officials, attorneys, local units of government, developers, and other county departments with complex land surveying and land ownership questions. In many instances, the County Surveyor acts as an approving authority by reviewing survey maps. The County Surveyor also maintains a permanent record of surveys performed.

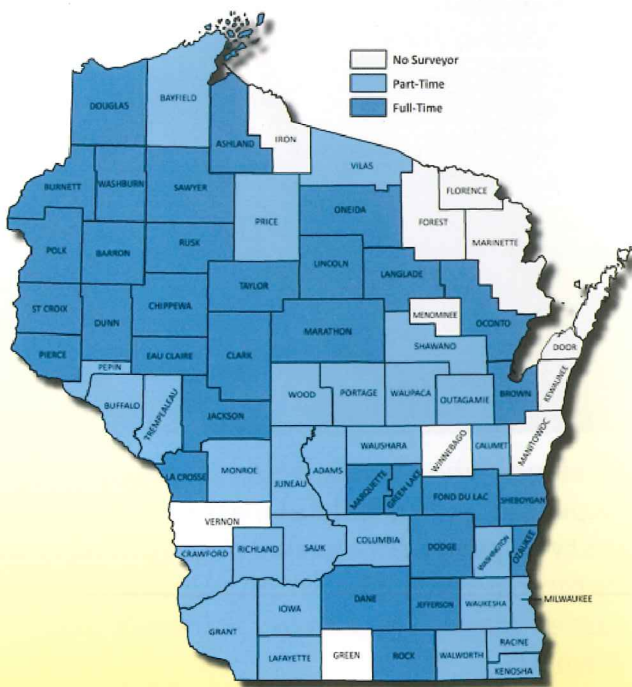


For questions, contact Wisconsin County Surveyor's Association Secretary, Kathy Swingle at dswingle000@centurytel.net or visit the Wisconsin Society of Land Surveyors at www.wsls.org.

October 2010

In addition to PLSS corners, County Surveyors also work to preserve and maintain a national geodetic control survey network of monuments by use of Global Positioning System (GPS), United States Geological Survey (USGS) monuments and other important geodetic markers. Your County Surveyor can assist you in identifying all varieties of survey markers. To determine the status of a specific corner monument or if you know of a corner location that is endangered, please contact your local County Surveyor.

Wisconsin County Surveyor Positions



The County Surveyor

Acts as...



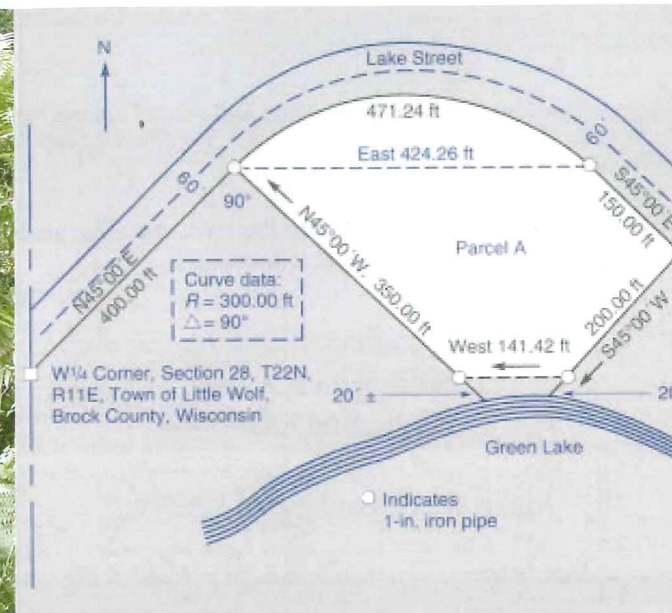
an approving authority by reviewing survey maps for compliance with State and local requirements; provides professional assistance to other County departments, other local units of government and the public concerning land surveying and land ownership rights.

Perpetuates...



restores and maintains the corners of the Public Land Survey System (PLSS). The County Surveyor accomplishes this by alternately working in the role of a detective, historian, archeologist, archivist, diplomat and draftsman.

Fulfills...



the duties as set forth in Wisconsin Statutes, Chapter 59.45 by maintaining a permanent record of all surveys and completing surveys as required by the County.